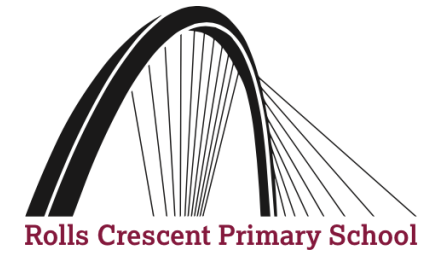


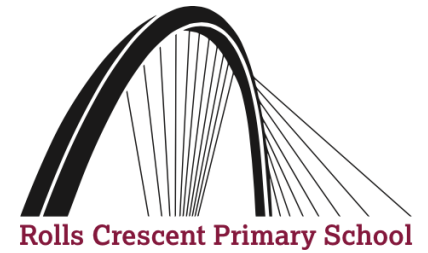
**Parent Consultation**  
**17 May 2016**



# The Aim of the Meeting

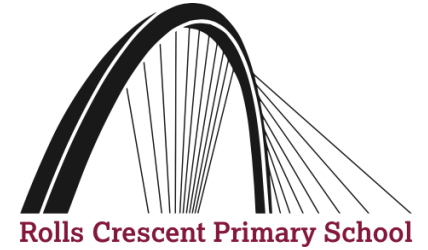
- To find out more about academy conversions.
- Opportunity for governors to find out more about how parents and carers feel about a conversion to Cooperative Multi Academy Trust Status with Chorlton Park and Old Moat.
- Feedback opinion to the Governing Body to help governors make their decision.

# History of the Decision to Consult



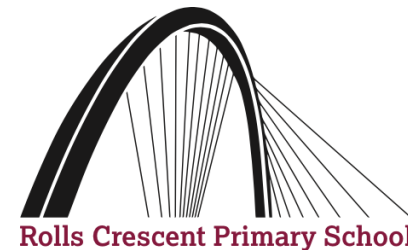
- Significant discussion the Governing Body over the past year following the success of working collaboratively with Chorlton Park and Old Moat.
- Discussions with DfE, lawyers, senior staff and other academies.
- Majority decisions by Governors to consult with parents and carers, staff and other partners on academy conversion.

# Rolls Crescent's Vision



- . Preparing children for the future.
- . Climate of change.
- . Other schools in academies.
- . Improving outcomes through collaboration.
- . Forefront of innovation
- . Being a Co-operative Academy

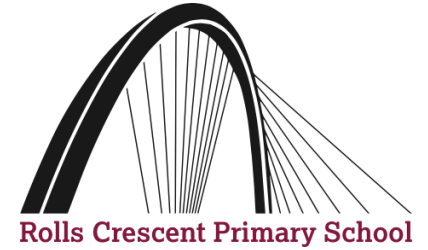
# Rolls Crescent's Current Status



- We are a Local Authority school funded by Manchester City Council
- Part of our budget is retained for Local Authority Services
- We already opt out of many Local Authority Services

We opted out of Local Authority run school meals and have a good quality meal which is over £36 cheaper per child, per year, than the Local Authority alternative.

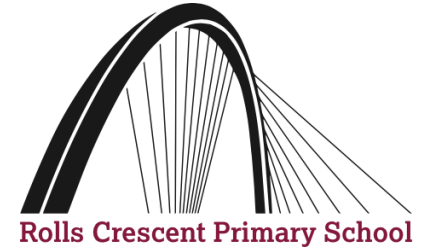
# Local Authority's Current Position



- Adopting a neutral stance on academy conversions
- Has faced cuts to staffing levels and resources and is facing further cuts
- Offers its services to all schools on a 'buy back' basis

The Local Authority for example, used to employ an ex-fire officer to support schools in fire safety. This was a valuable free service. This post no longer exists and schools have learnt to become more independent and seek support from other sources.

# Collaboration



- Mr Watson – Executive head.
- Collaborative approach within school.
- Collaborative approach within partnership schools.

# Cooperative Multi Academy Trusts



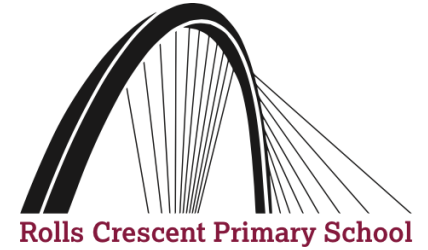
**By legally becoming a co-operative academy we ensure that:**

- the school serves the needs of our community by staying locally run
- there is a long term commitment to co-operative values: Self Help, Self-Responsibility, Democracy, Equality, Solidarity, Ethical Value
- there is a long term commitment to strengthening the link with our local communities

“Cooperative Trusts are about mutualisation and groups of schools working strategically together for the common good” – *Titus Alexander, Convenor of Democracy Matters*

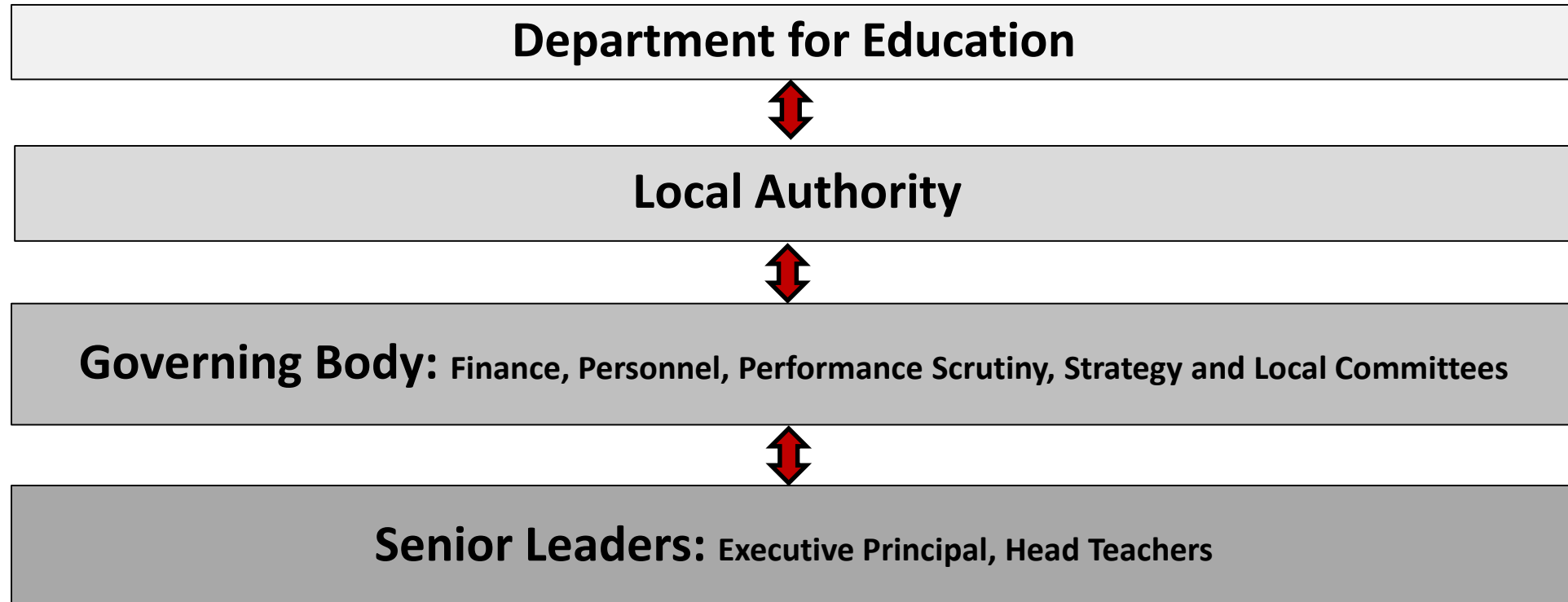


# Admissions, Special Educational Needs & Exclusions

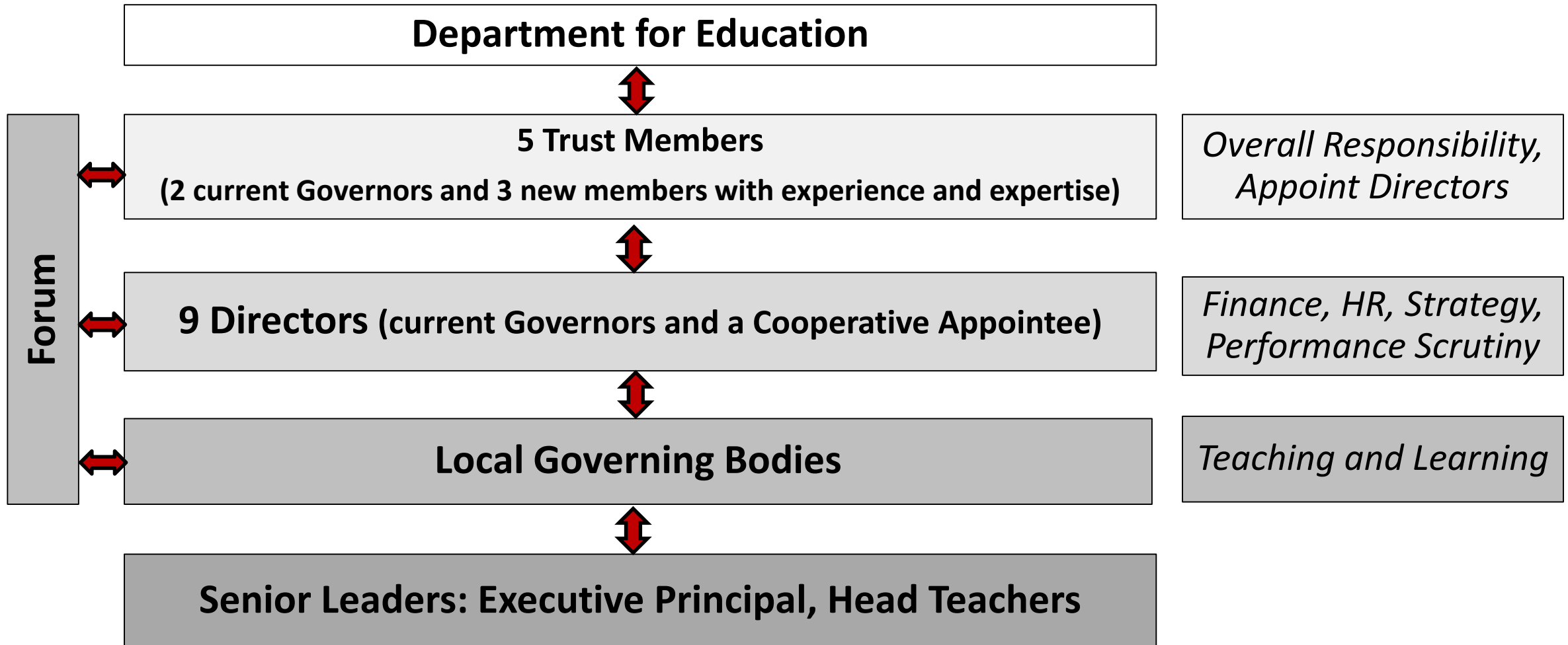


Academies are required to follow the law and guidance on admissions, special educational needs and exclusions as if they were maintained schools

# Rolls Crescent's Current Structure



# Proposed Structure



# End of Presentation



Opportunity for parents and carers to ask questions or share their opinions

There are forms on the table and we would welcome written feedback at the end of this meeting or complete an on-line form on the Academy Consultation tab on the website:  
[www.rolls-crescent.manchester.sch.uk](http://www.rolls-crescent.manchester.sch.uk)